

NEED SOMEONE TO TALK TO?

Mental Health Services Now Available By Telephone or Video

Most insurance accepted,
including Medicaid Managed Care. Sliding scale fee available.
Psychiatric medication management also available.



Visit www.fsw.org/LetsTalk
for more information or contact
one of our centers directly:



Mt. Vernon

t: 914-668-9124 x10
e: mfurtic@fsw.org

Port Chester

t: 914-241-2240
e: ldeluccia@fsw.org

White Plains

t: (914) 948-8004 x22
e: lmarc@fsw.org

Echo Hills/Hastings

t: 914-294-4746
e: mrickenberg@fsw.org

Pelham

t: 914-738-1728
e: alevine@fsw.org

Sleepy Hollow

t: 914-631-2022
e: khoward@fsw.org

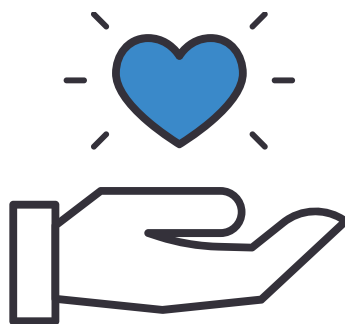
Yonkers

t: 914-964-6767
e: alevine@fsw.org

NECESITA ALGUIEN CON QUIEN HABLAR?

Servicios de Salud Mental Disponibles Ahora por Telefono o Por Video

Aceptamos la mayoría de seguros medicos
incluyendo Medicaid. Escala proporcional de cuotas disponible.
Administracion de medicamento psiquiátrico disponible.



Visitenos al www.fsw.org/LetsTalk
para mas informacion, o contacte a uno de nuestros
centros directamente:



Mt. Vernon

t: 914-668-9124 x10
e: mfurticke@fsw.org

Port Chester

t: 914-241-2240
e: ldeluccia@fsw.org

White Plains

t: (914) 948-8004 x22
e: lmarch@fsw.org

Echo Hills/Hastings

t: 914-294-4746
e: mrickenberg@fsw.org

Pelham

t: 914-738-1728
e: alevine@fsw.org

Sleepy Hollow

t: 914-631-2022
e: khoward@fsw.org

Yonkers

t: 914-964-6767
e: alevine@fsw.org